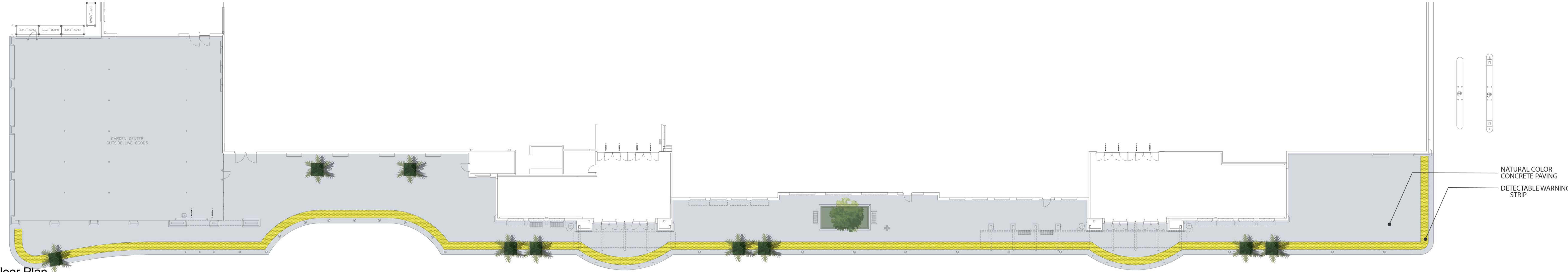
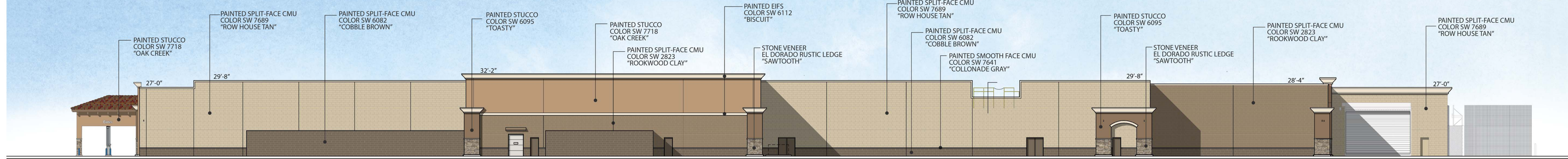


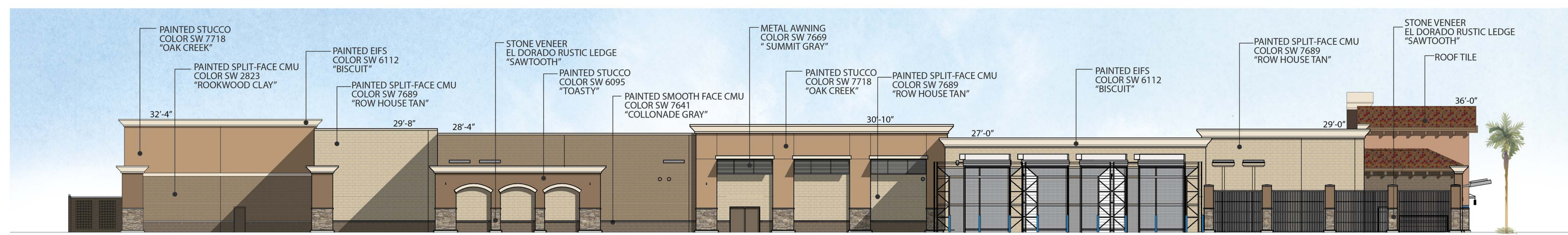
1. Front - North Elevation



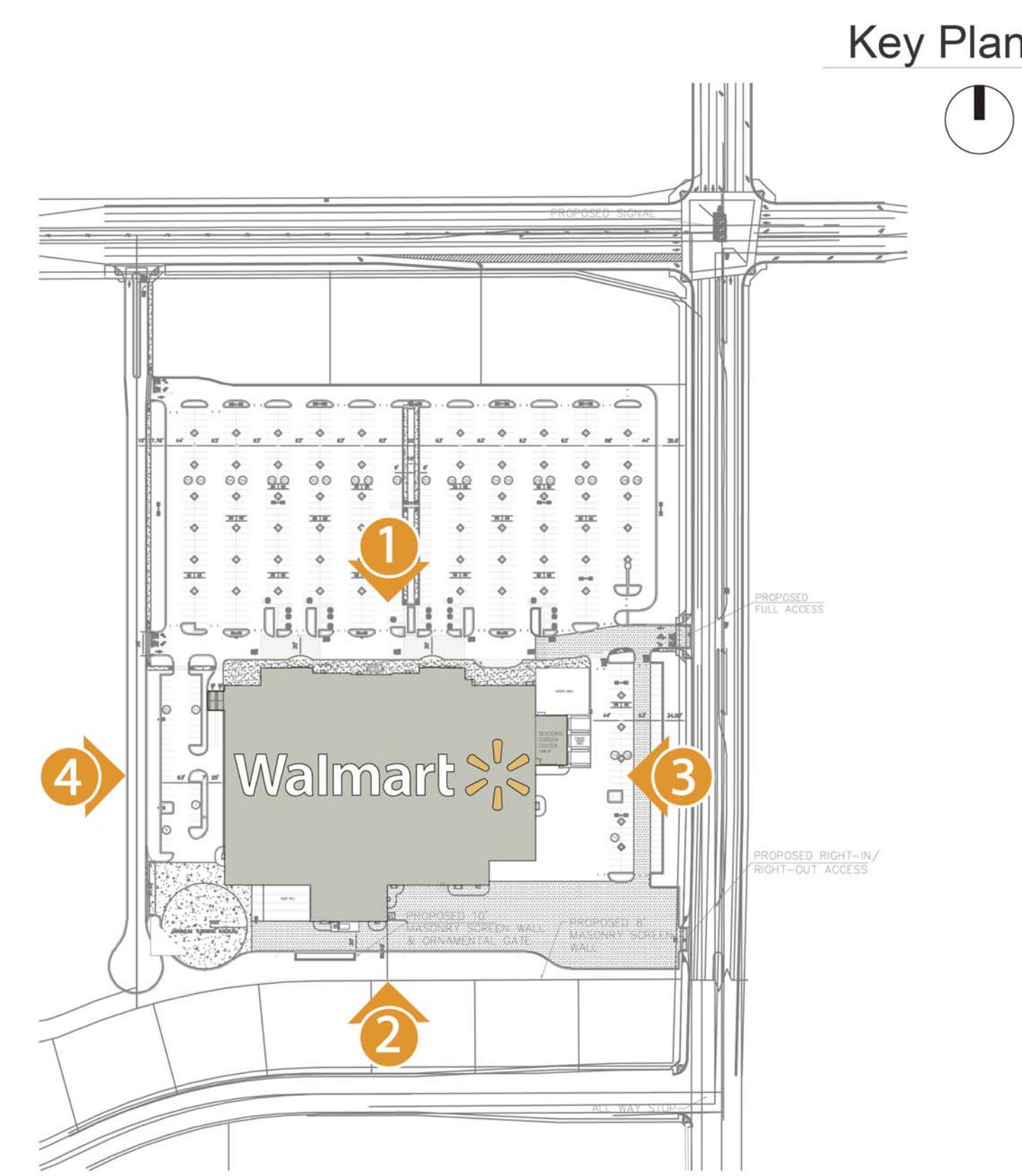
Partial Floor Plan



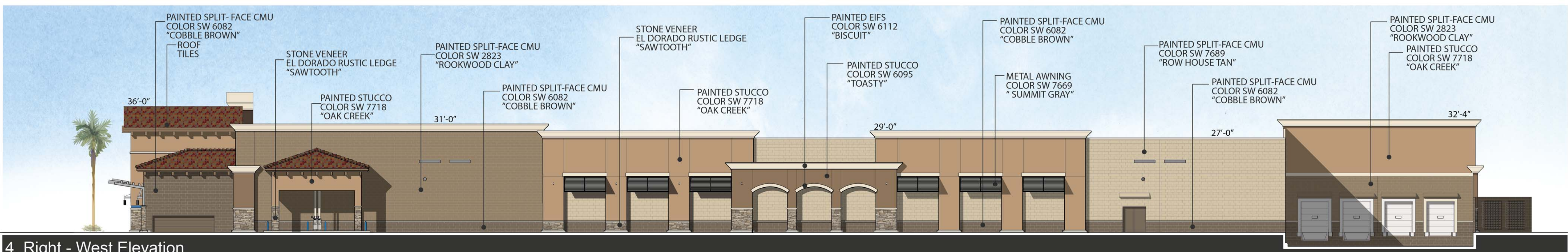
2. Rear - South Elevation



3. Left - East Elevation



Key Plan



4. Right - West Elevation

Note: Elevations are subject to final approval by the City.

Note: Due to individual computer monitors and printer limitations, colors seen here may not accurately reflect true colors. To confirm the color choices, refer to actual color/material board.